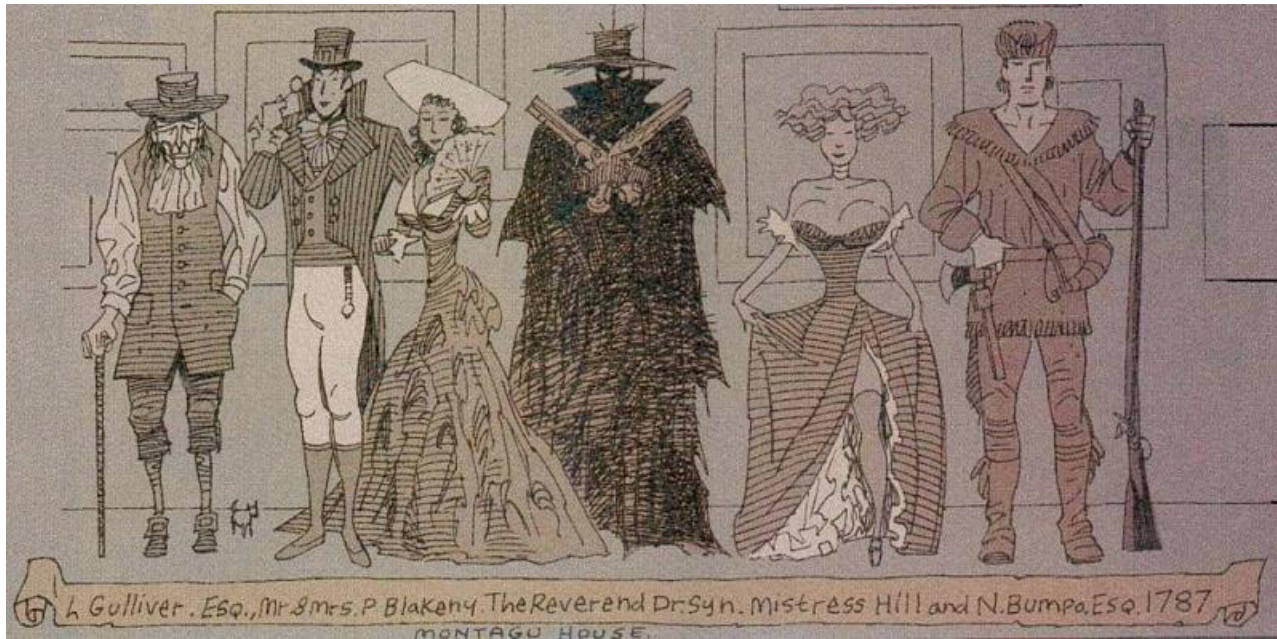


Name: _____

League of Extraordinary Gentlemen
 MLA Practice



The above picture comes from the graphic novel *League of Extraordinary Gentlemen*. The comic is about a series of Victorian heroes who band together to fight evil. Each hero was taken from a book set in the Victorian time period. In the comic, when the characters are brought together, Alan Quartermaine looks up and sees this picture of a former league on the wall. Each hero in this league was taken from stories set in the 1700s. Your job is to identify who they are, what story they came from, and tell a little about the person, and to document in proper MLA format where you got the information. **YOU MAY NOT USE THE SAME SOURCE TWICE!**

Name	Complete/Full Name	Something about the character	Story Origin	MLA for your source of information
L. Gulliver				
Mr. and Mrs. P. Blakeney				
The Reverend and Dr. Syn				
Mistress Hill				
N. Bumpo				
Besides the characters, what is the allusion in this picture?				